

X-ray Inspection System



Equipped with a high-precision dual energy sensor

SXM2-3671MW

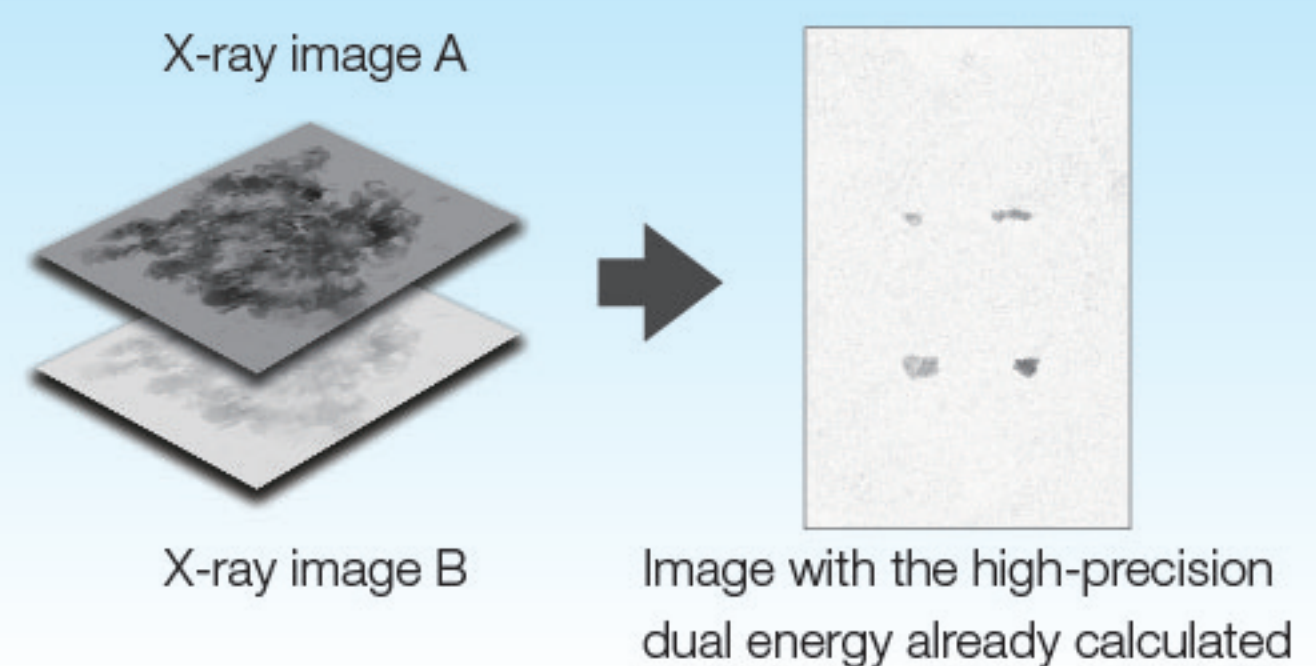
NEW

XrayHawk



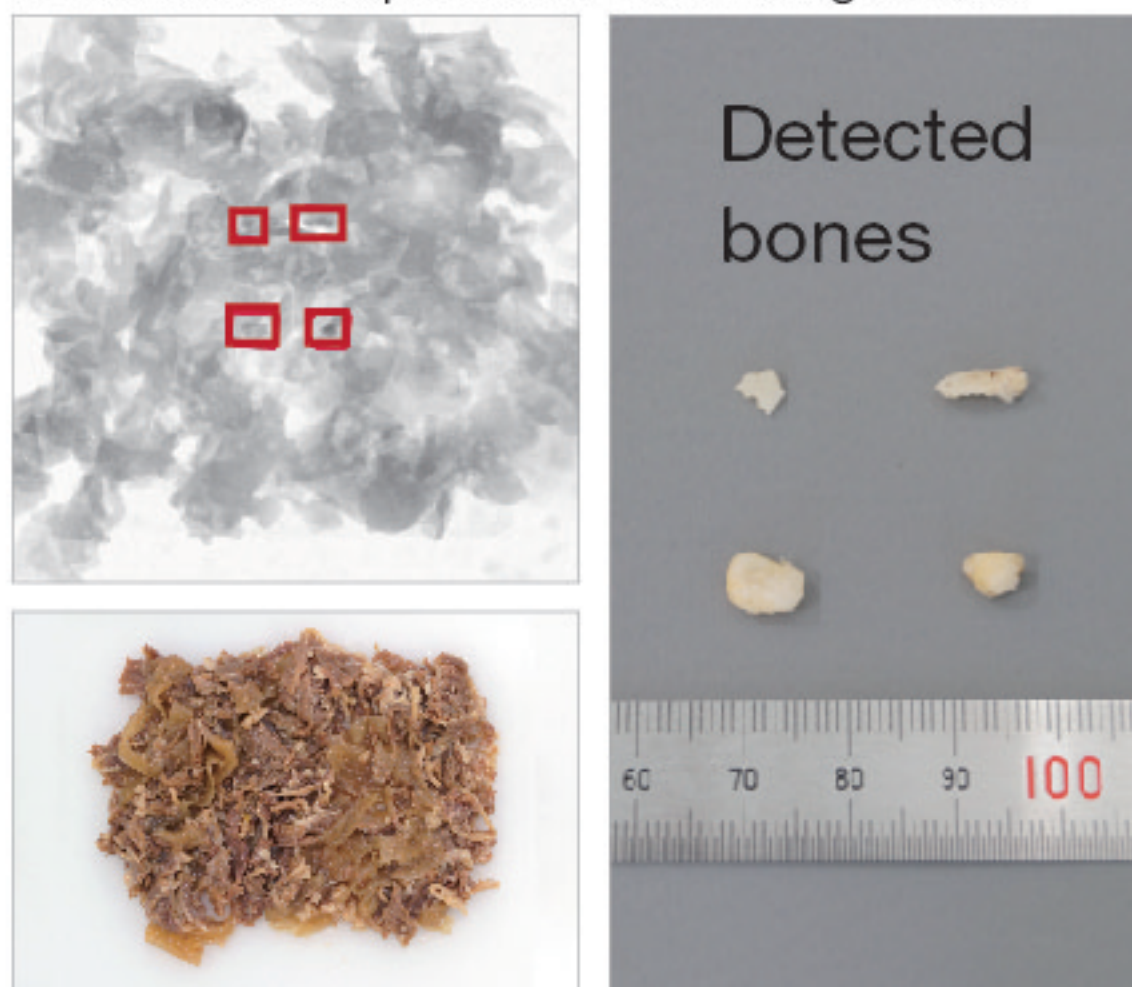
High Resolution Dual Energy

Images are processed based on two images with different energy to perform the high-precision marking.

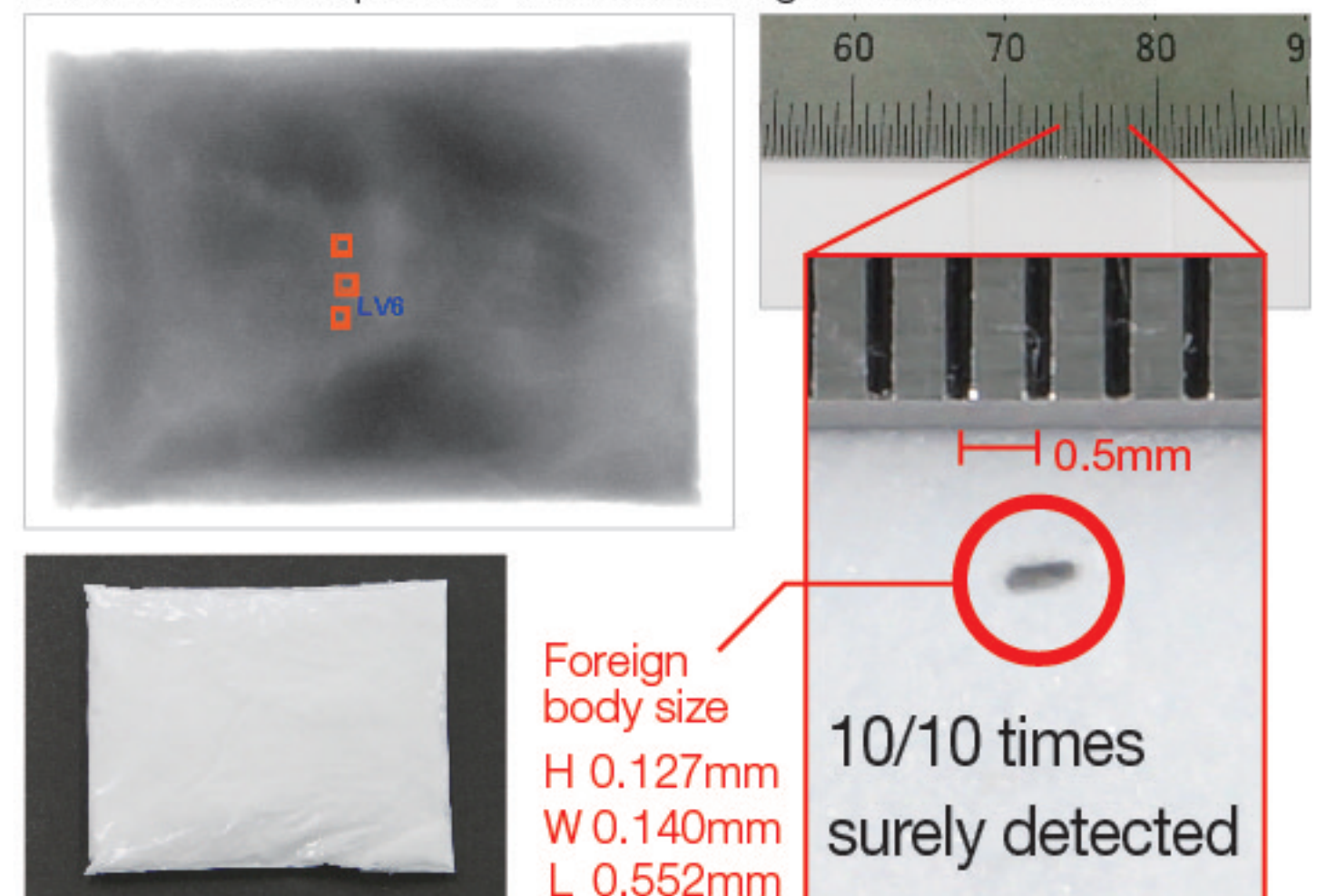


It can detect the foreign matter that cannot be detected by the conventional X-ray inspector

Product to be inspected: Beef-bowl ingredients



Product to be inspected: Powder in bag Thickness 20mm



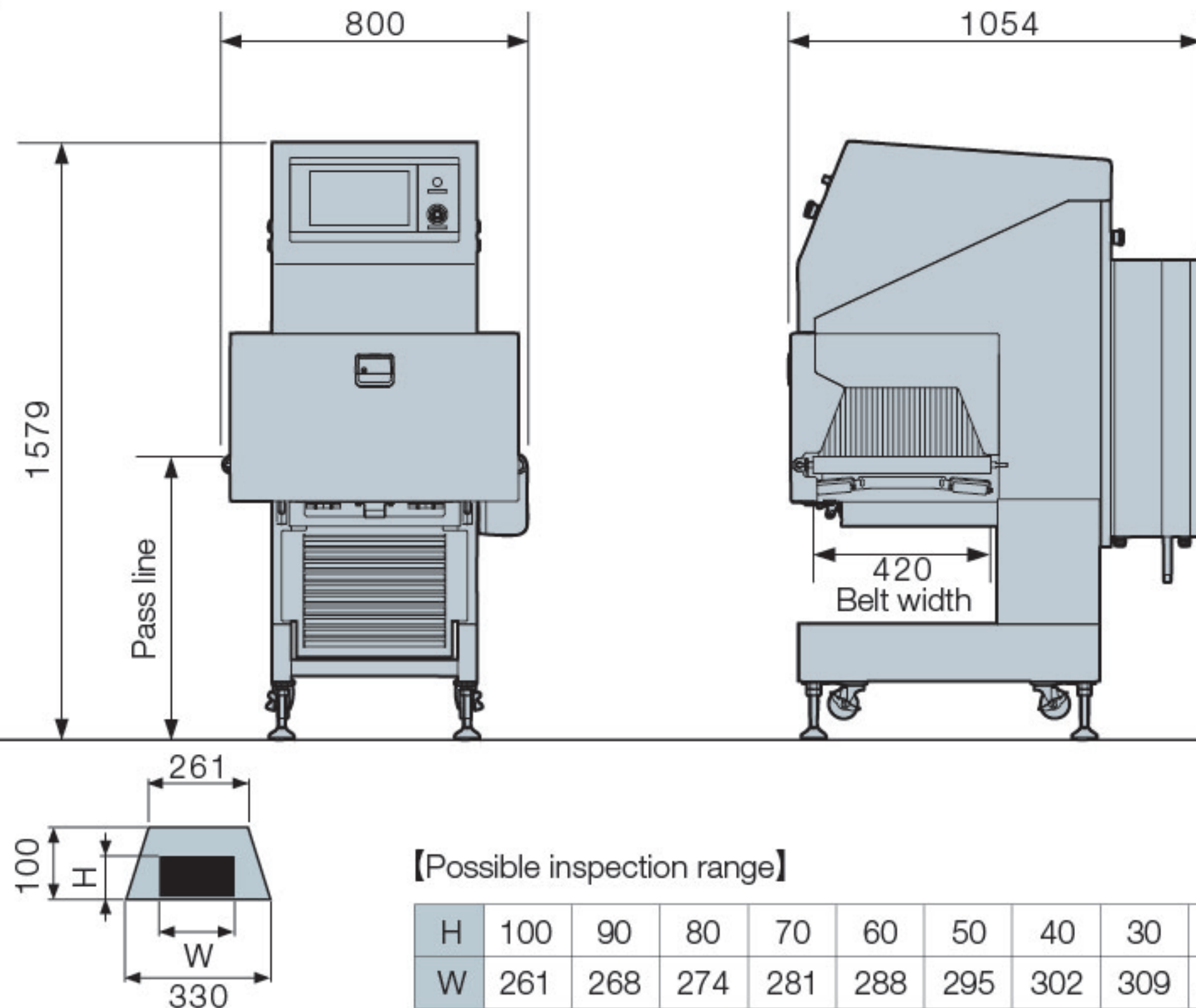
Usage

It can detect the foreign matters that cannot be detected by the conventional X-ray inspector. Especially it can detect the foreign matters effectively inside meat, ham, sausage and so on, and reduce false detection rate.

Feature

The industry's first high resolution dual energy X-ray inspect system. Compared with the our conventional X-ray inspector, we can obtain the better images, reduce the impact from products and finally detect the foreign matters by high resolution dual energy sensor which is independently developed by us.

【Appearance figure】



Unit: mm

【Possible inspection range】

H	100	90	80	70	60	50	40	30	20	10	0
W	261	268	274	281	288	295	302	309	316	323	330

Model	SXM2-3671MW
Dimension of inspection product	Maximum passage width 330mm, Maximum passage height 100mm
Max. inspectable width (on the belt surface)	330mm
Transport belt speed	15-45m/min *1
Weight capacity	10kg
Detection sensitivity	φ0.2mm iron or stainless ball, stone, glass, hard bone, and high density plastic pieces, etc. *2
Display unit	15.6 inches-wide TFT color LCD (with touch panel)
Structure	Main unit/Base: All-stainless (SUS304) Waterproof structure : Main unit equivalent to IP66 (excluding the cooler)
Pass line	750mm±50mm
Max. X-ray output	Tube voltage: 75kV, Tube current: 8.0mA (Max: 300W)
Operating environment	Temperature: 0 to 35℃, Humidity: 30 to 85%, No dew condensation allowed. (It is necessary to clean the filter periodically.)
Weight	350kg
Main power supply	AC200V±10%, 2.8kVA, 50/60Hz

*1 Please ask us about other transportation belt speed.

*2 The detection capability may vary depending on the inspection product and operating environment.

In the case that installation place has large temp. change and (or) high humidity, item to be inspected is cold or hot, optional equipment may be required.

For more information, contact our office listed below.

The contents of the specifications are subject to change without prior notice due to continual improvement.

 **SYSTEM SQUARE**
System Square Inc. Japan

www.system-square.com/en/

Head Office / Head Plant
157 Kanawa, Kitamachi, Nagaoka, Niigata 9402121, Japan
TEL: +81-258-47-1377 FAX: +81-258-47-0161

Agents
Korea · Taiwan · China · Philippines · Thailand · Singapore · Australia · Europe
United Arab Emirates · Malaysia · Indonesia · Vietnam · Mexico · Brazil · Chile

Japan office
Sapporo · Iwate · Sendai · Niigata · Kanto · Shizuoka · Toyama · Nagoya
Kansai · Hiroshima · Shikoku · Fukuoka · Kagoshima