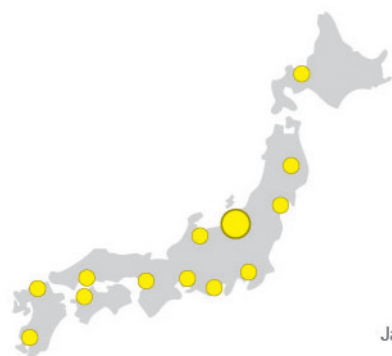


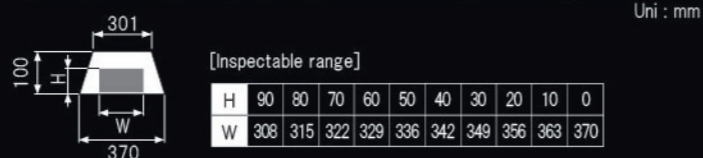
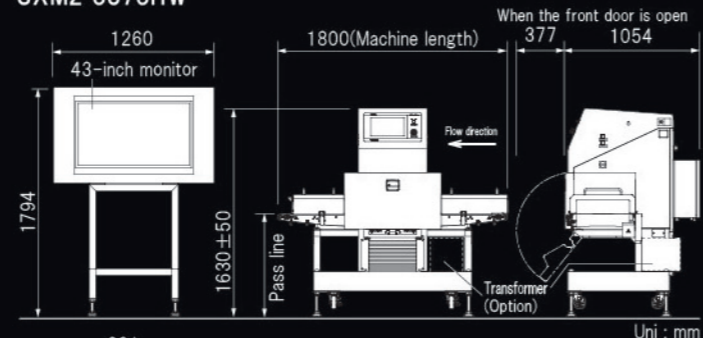


Agents



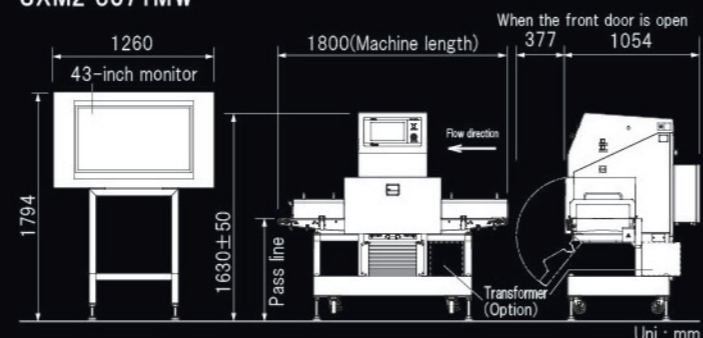
Japan office

SXM2-3873HW



Model	SXM2-3873HW
Dimension of inspection product*	Tray size: W365mm × L660mm × H50mm (for reference)
Transport weight	10kg*2
Transport belt speed	10-30m/min*3
Belt width	420mm
Display unit	One 43-inch monitor, 15.6-inch wide TFT color LCD (with touch panel)
Structure	Main unit/Base: All-stainless (SUS304) Waterproof structure with the main unit conforming to IP66 (excluding the cooler)*4
Pass line	800±50mm
Max. X-ray output	Tube voltage (Max.): 75kV, Tube current: 8.0mA However, the electric power is limited to 300W.
Operating environment	Temperature: 0 to 35°C, Humidity: 30 to 85%, No dew condensation allowed*5
Weight	480kg
Power supply	AC200~240V±10% 2.8kVA 50/60Hz

SXM2-3671MW



Model	SXM2-3671MW
Dimension of inspection product*	Tray size: W320mm × L660mm × H50mm (for reference)
Transport weight	10kg*2
Transport belt speed	10-30m/min*3
Belt width	420mm
Display unit	One 43-inch monitor, 15.6-inch wide TFT color LCD (with touch panel)
Structure	Main unit/Base: All-stainless (SUS304) Waterproof structure with the main unit conforming to IP66 (excluding the cooler)*4
Pass line	800±50mm
Max. X-ray output	Tube voltage (Max.): 75kV, Tube current: 8.0mA However, the electric power is limited to 300W.
Operating environment	Temperature: 0 to 35°C, Humidity: 30 to 85%, No dew condensation allowed*5
Weight	480kg
Power supply	AC200~240V±10% 2.8kVA 50/60Hz

*1 According to the product length, the cover may be needed. *2 For other weight, contact System Square Inc. *3 For other transport belt speed, contact System Square Inc. *4 This waterproof standard may not apply when options are mounted. *5 When the operating environment temperature exceeds 35°C, contact System Square Inc. *Appropriate options may be separately needed in the following cases: Large temperature deviation in the installation location, high humidity, too cold or too hot object to be inspected.

For more information, contact our office listed below.

The contents of the specifications are subject to change without prior notice due to continual improvement.



System Square Inc. Japan

Head Office / Head Plant
157 Kanawa, Kitamachi, Nagaoka, Niigata 9402121, Japan
TEL +81-258-47-1377 FAX +81-258-47-0161

Agents
Korea • Taiwan • China • Philippines • Thailand • Singapore • Australia
Europe • United Arab Emirates • Malaysia • Indonesia • Vietnam
Mexico • Brazil • Chile

Japan office
Sapporo • Iwate • Sendai • Niigata • Kanto • Shizuoka • Toyama • Nagoya
Kansai • Hiroshima • Shikoku • Fukuoka • Kagoshima

www.system-square.com/en/



SXM2-3873HW SXM2-3671MW

Remaining Bone Inspection System (X-ray)

REMAINING BONE INSPECTION SYSTEM

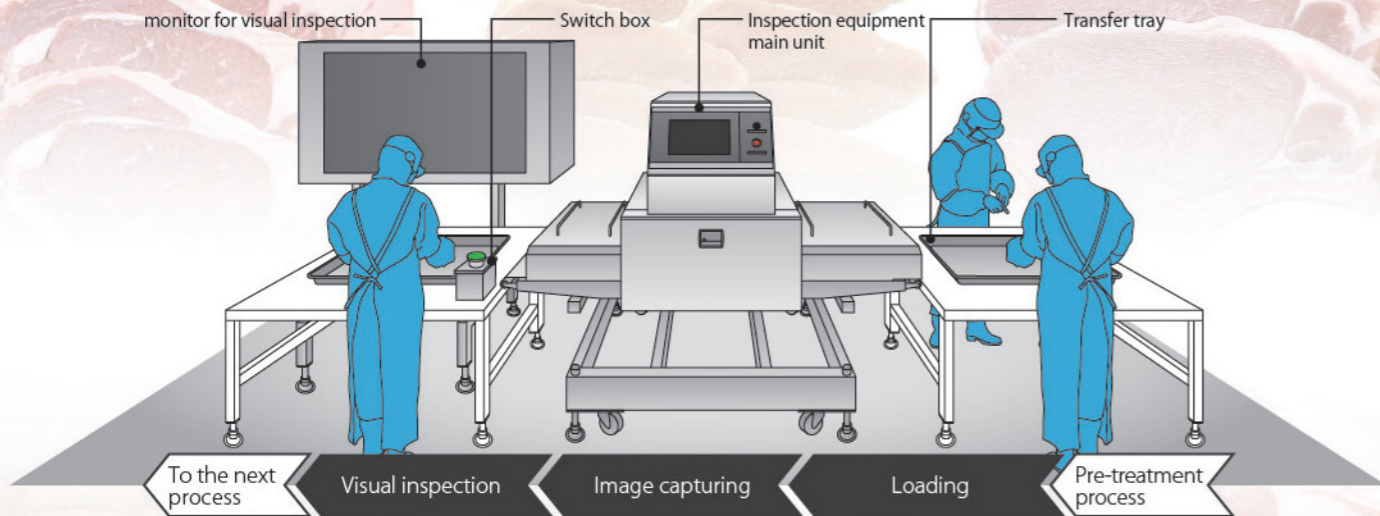
1. For meat
2. Visual inspection type

SYSTEM SQUARE INC.

Remaining Bone Inspection System for Meat

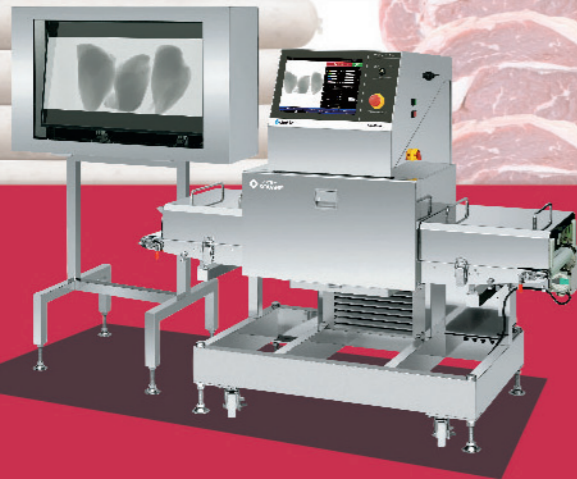
With this remaining bone inspection system, workers perform the visual inspection based on X-ray images displayed on the monitor and remove foreign objects.

Configuration image of semi-automatic inspection tray flow line



SXM2-3873HW Standard model

Visual inspection is achieved at reasonable cost. Compliant with water-proof / dust-proof IP66 (excluding the cooler)



SXM2-3671MW High resolution model

Built-in high-precision dual energy allows you to view bones that are overlooked by the conventional X-ray inspection system. Compliant with water-proof / dust-proof IP66 (excluding the cooler)



High-precision dual energy inspection

Images are processed based on two images with different energy to perform the high-precision marking.

Product to be inspected
Beef bowl ingredients

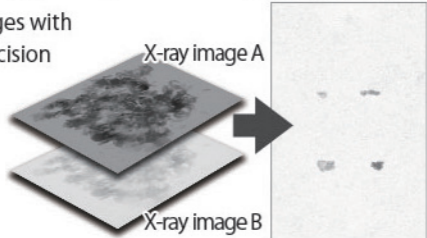
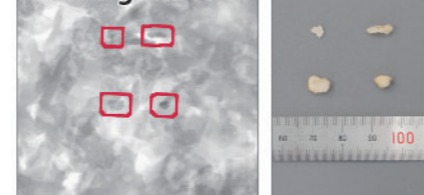


Image with the high-precision dual energy already calculated

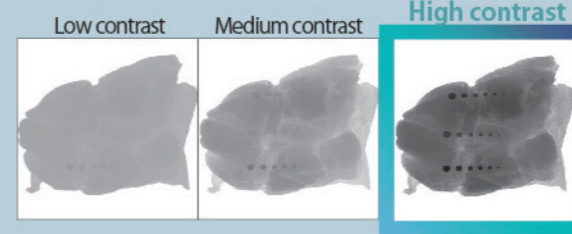
Marking of bones



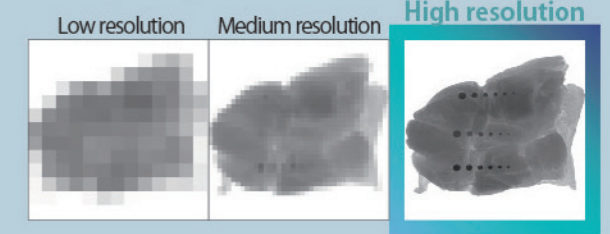
High resolution model provides high contrast and high resolution.

Bones are easily recognized accurately with high contrast and high resolution. Therefore, the possibility to overlook small bones is reduced.

Conceptual diagram of contrast differences

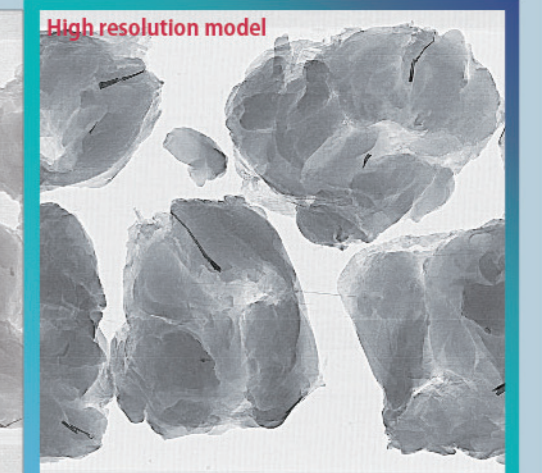
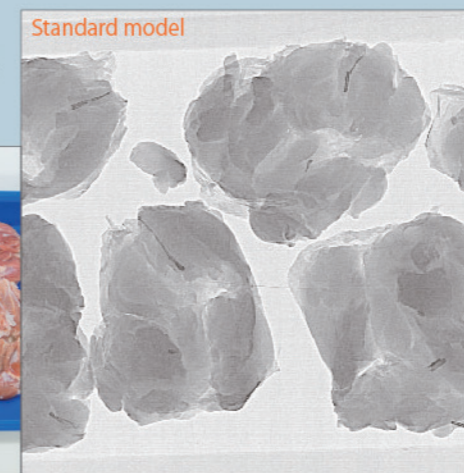


Conceptual diagram of resolution differences



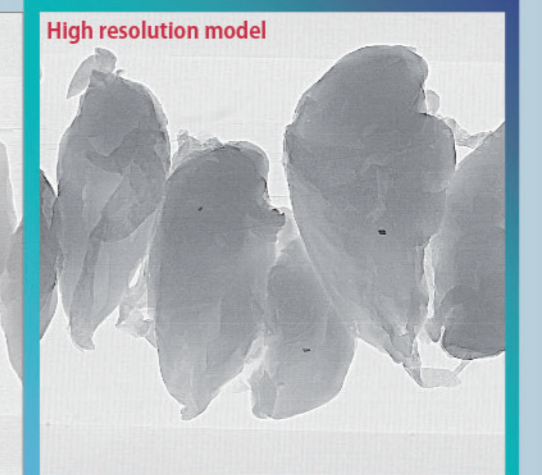
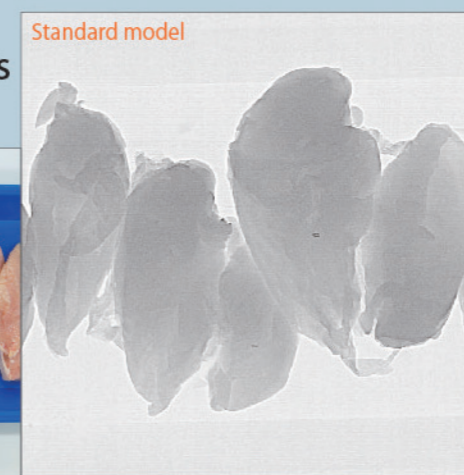
Inspection of chicken leg meats

Product to be inspected:
Chicken leg meats in tray



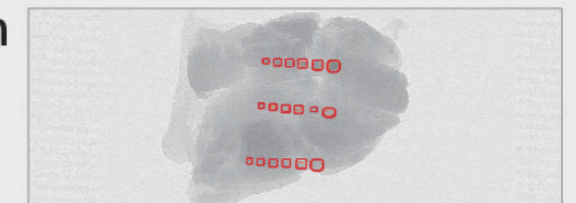
Inspection of chicken breast meats

Product to be inspected:
Chicken breast meats in tray



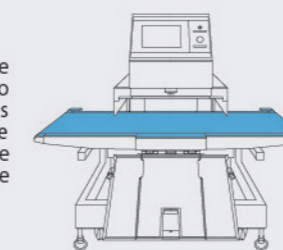
Visual inspection assist function

Foreign objects are marked to assist the visual inspection. Use of this assist function makes it possible to prevent bones from being overlooked by new workers. Therefore, the stable quality can be maintained regardless of workers' skills.



Excellent cleanliness

In the conventional model, the transfer section is separated into three portions. However, in this model, three portions of the conventional transfer section are integrated to one section and the cleanliness is improved greatly.



Automatic inspection specifications joined lineup

The system with the automatic inspection specifications that detects foreign objects with high sensitivity is also available.

Automatic inspection type
Left: SX2-3873HW/Right: SXM2-3671MW

